

3 Operation

Please refer to the Dream Player User Manual for loading and operating the sound files for the Dream Player onto your SD Flash card.

While the Dream Player is playing, the Control Output associated with the currently playing track will be active. This will cause the Dream Switcher to select the speaker output associated with the currently playing track. This is accomplished with relays on the Dream Switcher which select one of the speaker outputs at a time.

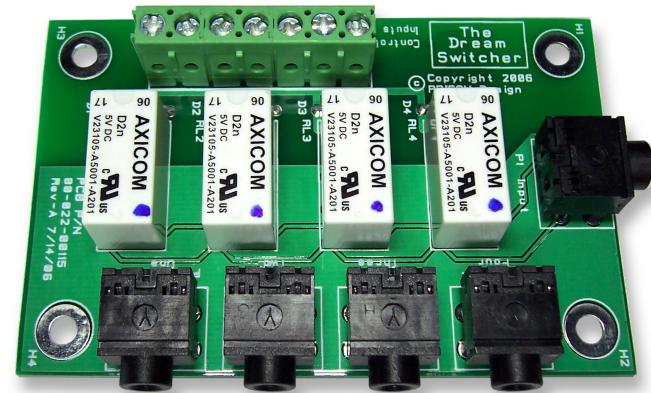
Using the Dream Switcher creatively can result in a tremendous cost savings by enabling a single Dream Player to provide sounds to 4 separate locations, but only one at a time.

If you are considering a more elaborate application or need additional assistance, don't hesitate contacting us at support@pricom.com. We will do our best to help you figure out the best way to achieve your goals.

You can also visit our web site or www.BobsBench.com for many interesting applications.

Thanks again for your purchase, and be sure to let us know if we can help.

PRICOM Design
2755 Slocum Rd
Peyton, CO 80831
www.pricom.com
info@pricom.com



Dream Switcher

User Manual

Version 1.0
Copyright ©2006 PRICOM Design



1 Overview

Congratulations on your purchase of the Dream Switcher. The Dream Switcher is an add-on product for the Dream Player. The Dream Player is a high quality, solid-state playback device for audio program material. Similar in function to a good CD player, the Dream Player adds the ability to remotely trigger one of four audio ‘tracks’ and loop them continuously. By adding the Dream Switcher, you can send those four audio tracks to separate speaker systems. The typical connection diagram is shown below.

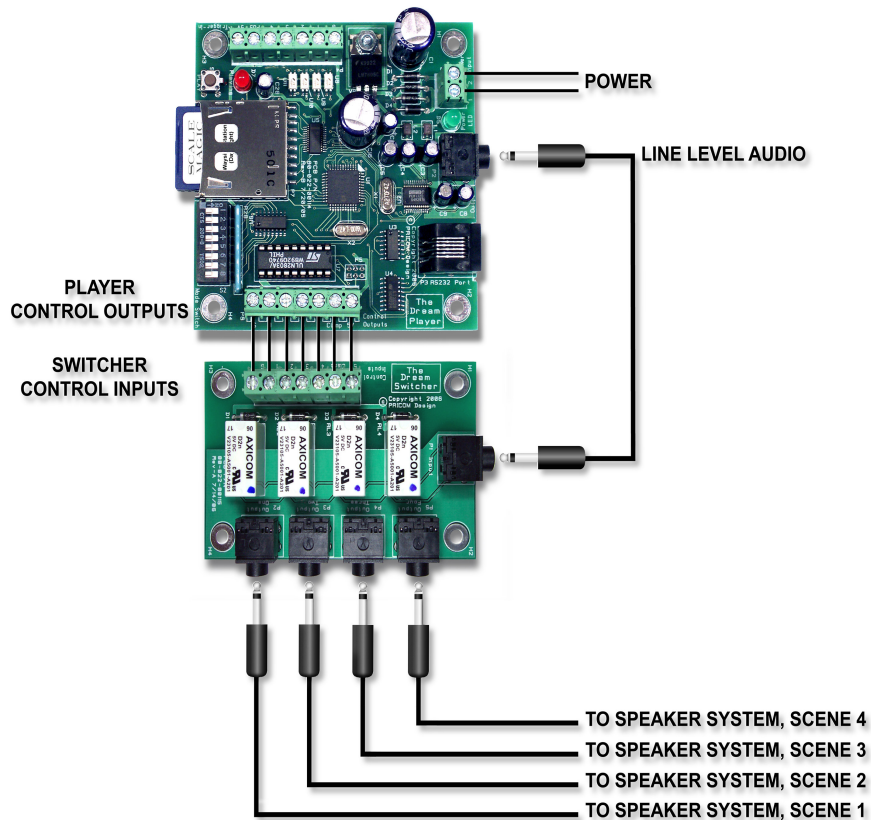


Figure 1 - Connection Diagram

2 Connections

In order to fully utilize your new Dream Switcher, simply connect your Dream Player and speaker systems as described below.



Start by connecting the audio patch cable (included) between your Dream Player and the Dream Switcher. This connection cable is depicted in Figure-1, and is called “Line Level Audio”. The supplied cable may have different colored connectors on each end, but they are both functionally the same. It does not matter which colored end is used for the Dream Player or the Dream Switcher.

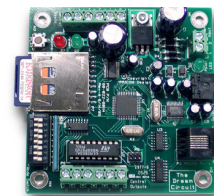


Next, connect all 7 of the screws on the Control Outputs terminal strip on your Dream Player to the Control Input terminal strip on the Dream Switcher as shown in Figure-1. Be sure to keep all connections matched so that the same signal names on both boards are connected to each other. Any type of wire will suffice, but using a stranded wire of about 20-24 gauge will give the most flexible and reliable connections.



The four output audio jacks on the Dream Switcher labeled “Output One”, “Output Two”, “Output Three”, and “Output Four” are designed to feed the audio signal into each set of powered speakers.

Powered speakers are the type typically used on computers and have their amplifier built-in. Connect your powered speakers the output jacks as depicted in Figure-1.



Now connect your Dream Player as described in the Dream Player User Manual if not already connected. Please note that the Control Output connections can still be used to drive other loads in addition to the Dream Switcher. Just be sure to stay below the power rating of the Dream Player Control Outputs.

